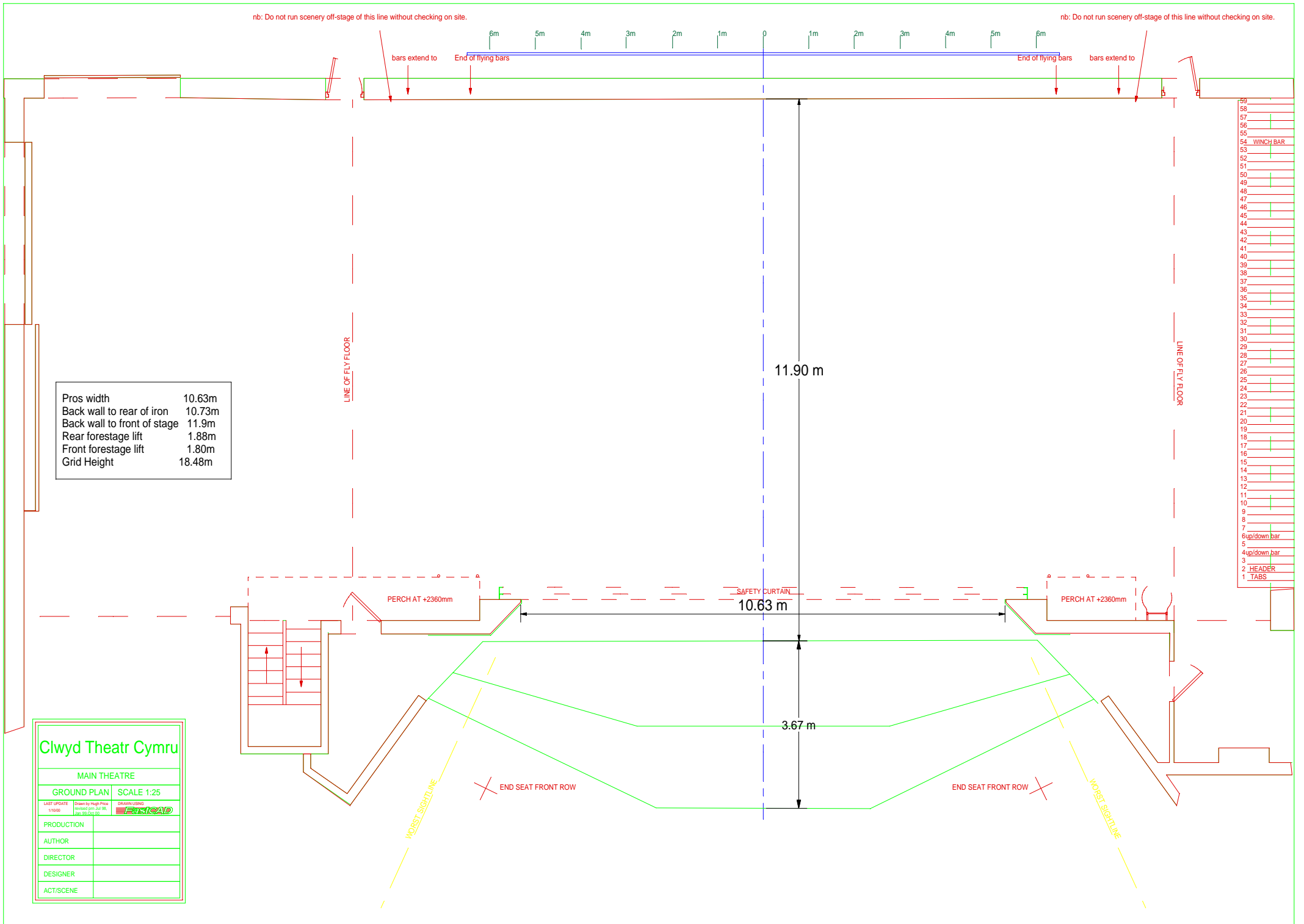


nb: Do not run scenery off-stage of this line without checking on site.

nb: Do not run scenery off-stage of this line without checking on site.



Pros width	10.63m
Back wall to rear of iron	10.73m
Back wall to front of stage	11.9m
Rear forestage lift	1.88m
Front forestage lift	1.80m
Grid Height	18.48m

Clwyd Theatr Cymru

MAIN THEATRE	
GROUND PLAN	SCALE 1:25
LAST UPDATE 1/10/00	Drawn by Hugh Price Reviewed by: Jul 08, Jan 09, Oct 09
PRODUCTION	DESIGNED BY FRISCAD
AUTHOR	
DIRECTOR	
DESIGNER	
ACT/SCENE	

- 59
- 58
- 57
- 56
- 55
- 54 WINCH BAR
- 53
- 52
- 51
- 50
- 49
- 48
- 47
- 46
- 45
- 44
- 43
- 42
- 41
- 40
- 39
- 38
- 37
- 36
- 35
- 34
- 33
- 32
- 31
- 30
- 29
- 28
- 27
- 26
- 25
- 24
- 23
- 22
- 21
- 20
- 19
- 18
- 17
- 16
- 15
- 14
- 13
- 12
- 11
- 10
- 9
- 8
- 7
- 6 up/down bar
- 5
- 4 up/down bar
- 3
- 2 HEADER
- 1 TABS